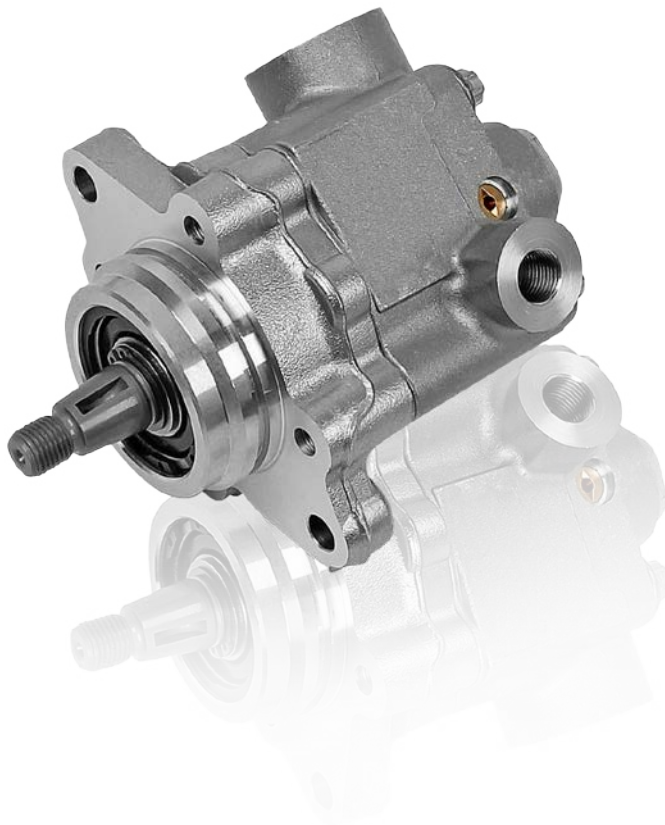


Servo pump



Replaces

Scania 2064855

Suitable for

Scania Bus 4-/F-/K-/N-Series

Scania L-/P-/G-/R-/S-Series

Scania 4-Series

Scania P-/G-/R-/T-Series

Product details

Pump capacity:	22 L/min
Direction of rotation:	right
Speed:	500 – 360 r/min
Hydraulic connection:	M16x1,5 / M 26x1,5
Total length:	188,5 mm
Mounting hole spacing:	130 mm
Mounting hole diameter:	11 mm
Flange diameter:	70 mm
Shaft diameter:	20 mm
Weight:	2,8 kg

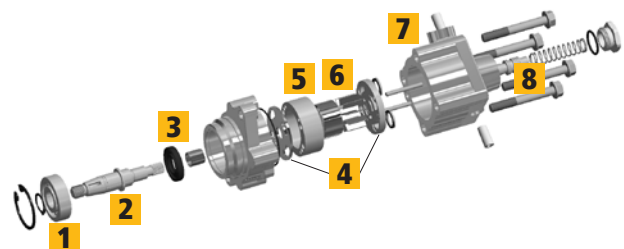
Product info:

The 1.19136 power steering pump generates the hydraulic oil required for easy steering of the vehicle and supplies it to the steering gear.

A blowhole-free aluminium housing manufactured by the high-pressure process contains a rotor with rotor blades manufactured to the highest precision, with the best possible surface roughness and extreme hardening, in order to withstand even the most extreme operating conditions in winter due to temperature fluctuations and salt. A durable, oil-tight pump is guaranteed by the use of a high-quality shaft seal ring. Each pump is individually checked for the manufacturer's specifications during production.

Structure of the servo pump

- | | |
|-----------------------------|----------------------------|
| 1 Ball bearing | 5 Rotor |
| 2 Drive shaft | 6 Rotor blades |
| 3 Shaft sealing ring | 7 Aluminium housing |
| 4 Thrust washers | 8 Control valve |



Servo pump



Tips & tricks

The equipment must be checked before the article is replaced. If a high water content or dirt particles are detected, the equipment must be replaced. In case of heavy soiling, the hydraulic system should be rinsed as described in the assembly instructions supplied with the article. The mounting surface must be cleaned. If sealant is used during assembly, it is important that no sealant enters the operating fluid circuit.

The erection screws must be mounted with the torque specified by the manufacturer. The connections should be installed by hand to prevent damage to the thread. Now ventilate the system: The steering wheel must be turned three times to the left and three times to the right when the front axle is raised. During the subsequent test run, the leakage check must be carried out and the level of the equipment must be corrected.

DT Spare Parts

The complete range of the brand DT Spare Parts offers all the spare parts required for the repair and maintenance of commercial vehicles. The constant high quality level is achieved by uncompromising quality assurance and the continuous product optimization within the framework of the Diesel Technic Quality System (DTQS). Further infos at www.dtqs.de

Your personal benefits:

- Everything from a single source: 35,000 products
- Information: 30 product catalogues
- Support: sophisticated online Services
- Trust: 24-month guarantee
- Newsletter: the latest Informations

Further infos: <http://benefits.dt-spareparts.com>



Further articles from the product range of the brand DT Spare Parts

4.62162

Servo pump replaces
LuK: 542 0048 10



6.26407

Servo pump replaces
50 10 239 659



1.31954

Repair kit, servo pump
replaces 1118098,
276140



4.65358

Steering gear
replaces
940 460 3300



7.90302

Repair kit, steering
replaces
ersetzt 4255 6992



You can find products of the brand DT Spare Parts at authorized distribution partners and at www.dt-spareparts.com.

Connect and discover your personal advantages:

<http://benefits.dt-spareparts.com>



<http://www.facebook.com/DTSpareParts>
<https://plus.google.com/+DieselTechnicGroup>
https://twitter.com/DT_Spare_Parts